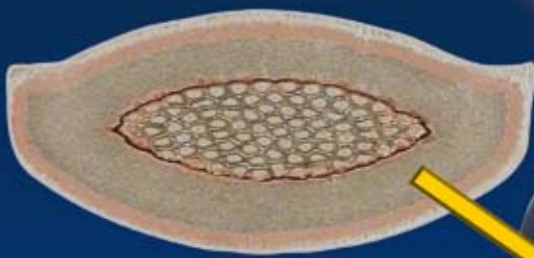


Crimp quality for the most stringent requirements ...

... with vibrations, humidity and temperature change



Crimp quality according to automobile industry standard



K511 - Hand crimping tool for 1 - 4 mm²



K512 - Hand crimping tool for 6 mm² + 10 mm²




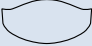
K 513 - Hand crimping tool for 2,5 - 6 mm²




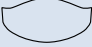

Product features

- Hand crimping tool with linear movement of the dies
- for applications in extreme conditions
- Ergonomically designed soft handles with non-slip-off grip material for comfortable working
- comfortable force transmission
- precisely grinded crimping profiles
- high precision crimping results
- precisely grinded crimping profiles
- integrated, disengageable ratchet

For automotive terminals

| Application | Conductor cross section mm ² | Tube dia. mm | | Thread | | | | | Part no. | Crimp form |
|--|---|--------------|---------|--------|----|------------------------|------------------------|-----------|----------|---|
| | | inside | outside | M3 | M4 | M5 | M6 | M8 | | |
|  for non-insulated cable lugs ring type | 1,0 | 1,5 | 2,8 | | | | | | K 511 |  |
| | 1,5 | 1,8 | 3,3 | | | AMK 11637 | | | | |
| | 2,5 | 2,3 | 4,2 | | | AMK 11640 | AMK 11641 | AMK 11230 | | |
| | 4 | 3,0 | 5,0 | | | AMK 11643 | AMK 11644 | AMK 11231 | | |
| | 6 | 4,0 | 6,0 | | | AMK 11113 | AMK 11645 | AMK 11232 | K 512 | |
| | 10 | 4,5 | 7,0 | | | AMK 11217 | AMK 11042 AMK 11505 | AMK 11506 | | |
| | 2,5 | 2,3 | 4,9 | | | | AMK 11052 | | K 513 | |
| | 4 | 2,8 | 5,5 | | | | AMK 11044 | AMK 11213 | | |
| 6 | 3,8 | 6,5 | | | | AMK 11045 AMK 11212 | AMK 11215 | | | |

For standard terminals

| Application | Conductor cross section mm ² | Tube dia. mm | | Thread | | | | | Part no. | Crimp form |
|--|---|--------------|---------|--------|------|------|------|------|----------|---|
| | | inside | outside | M3 | M4 | M5 | M6 | M8 | | |
|  for non-insulated cable lugs ring type | 1,0 | 1,5 | 2,8 | | | | | | K 511 |  |
| | 1,5 | 1,8 | 3,3 | 92R3 | 92R4 | 92R5 | 92R6 | | | |
| | 2,5 | 2,3 | 4,2 | 93R3 | 93R4 | 93R5 | 93R6 | 93R8 | | |
| | 4 | 3,0 | 5,0 | | 94R4 | 94R5 | 94R6 | 94R8 | | |
| | 6 | 4,0 | 6,0 | | 95R4 | 95R5 | 95R6 | 95R8 | K 512 | |
|  for non-insulated cable lugs fork type | 1,5 | 1,8 | 3,3 | 92C3 | 92C4 | 92C5 | 92C6 | | K 511 | |
| | 2,5 | 2,3 | 4,2 | 93C3 | 93C4 | 93C5 | 93C6 | | | |
| | 4 | 3,0 | 5,0 | | 94C4 | 94C5 | 94C6 | 94C8 | | |
| | 6 | 4,0 | 6,0 | | 95C4 | 95C5 | 95C6 | 95C8 | K 512 | |
| | 10 | 4,5 | 7,0 | | | 96C5 | 96C6 | 96C8 | | |